

THE ADDENDA NEWS

PRESIDENT'S MESSAGE

Happy Holidays Members;

What a year it was:

It is hard to believe that 2004 is almost over.

It seems like last January was last week. I am in total amazement thinking about all the things that have taken place over the past year,

The first word that comes to mind is:

"Terrorism"

It is amazing how this single word has changed every person in the world in one form or another. No one is immune from its impact we wake each day and see it on television, hear it on Radio, and read it in newspapers, magazines, and the internet. It permeates our day to day conversation with friends and family members. Our lives will never be the same.

Terrorism has now entered into our world of estimating. Architects today must incorporate many changes to accommodate this new way of life. Estimators today are already seeing these changes.

With the coming year just around the corner, we all must take personal responsibility in our profession to make sure these changes are accomplished.

Let's take pride in our work and lead by example as we show all citizens of the United States of America why ASPE members are the cream of the crop.

With your commitment to our industry we all can live a more safe and productive life.

I would like to wish each and everyone of our members a "Merry Christmas and a Happy New Year"

May 2005 bring joy and happiness to you and your family!

Alan K. Skinner
Chapter 6 -- President 2004-2005

Special points of interest:

- Due Dates for articles is 20th of month
- Job Posting

INSIDE THIS ISSUE:

President's Message	1
Committee Info	3
Advertising	4

ASPE MOTTO:

"IN THE BEGINNING...

WAS AN
ESTIMATE"

MISSION STATEMENT

THE AMERICAN SOCIETY OF PROFESSIONAL ESTIMATORS SERVES CONSTRUCTION ESTIMATORS BY PROVIDING EDUCATION, FELLOWSHIP AND OPPORTUNITY FOR PROFESSIONAL DEVELOPMENT.

JANUARY'S DINNER MEETING

TUESDAY, JANUARY 12TH
DOUBLETREE GUEST SUITES
320 N. 44TH ST.

5:30PM—8:00PM

COST: MEMBERS/GUEST: \$20.00
JOINT MEETING W/CS

QUOTE OF THE MONTH

Nothing gives one person so much advantage over another as to remain always cool and unruffled under all circumstances."

Thomas Jefferson

New Members
None

Members on the Move
None

Advertising

**ADDENDA NEWS
ADVERTISING RATES**
Call Ranee Duncan @ 602-222-5319

As a result of the 9/23 meeting the following are the revised proposed Addenda News Ad Rates. These rates include posting on the Chapter 6 web-site www.aspechapter6.org.

	<u>3 issues</u>
Business Card	\$ 75.00
1/4 Page	\$120.00
1/2 Page	\$180.00
Full Page	\$300.00

Chapter Members, please call for discounted rates. Format for all Ads shall be compatible with Microsoft Publisher. All ad copy must be received by the 20th of the month.

CHANGE OF ADDRESS FORM

Help us keep up to date on your whereabouts. We want to make sure we are able to keep you posted on all of the latest society information. If your address or FAX number has changed please take the time to fill out this form and fax it back to Alan Skinner at 602-943-8564.

NAME: _____
 COMPANY: _____
 MAILING ADDRESS: _____

 FAX NUMBER: _____
 E-MAIL ADDRESS: _____

COST OF DINNER MEETING INCREASES

We regret to inform you that the cost of the dinner meetings will be increasing starting with our March 8th meeting. The cost will increase from \$20 to \$25 per meal.

As we have all seen, the costs for concrete, steel, roofing materials, and oil have increased dramatically in the past year. Apparently, we can add food to that list.

Anyone upset, over this cost increase on our meals, is welcome to join the officers and board members at the next board meeting on February 15, 2005. At that time you are welcome to offer a solution to this problem. We need your help.

JOKES

You might be from Ohio, if:

You think all Pro Football teams are supposed to wear orange!

JOKES con't

You know all the 4 seasons: winter, still winter, almost winter and construction.

You live less than 30 miles from some college or university.

You know what a buckeye really is, and have a recipe for candied ones.

Toward the lake means "north" and "toward the river" means "south".

You know if other Ohioans are from southern or northern Ohio as soon as they open their mouths.

Vacation means spending a day at Cedar Point in the summer and deer hunting in the fall.

You measure distance in minutes.

Your school classes were canceled because of cold.

**ASPE CHAPTER SIX
COMMITTEE LISTING**

<u>Committee</u>	<u>Chairperson</u>	<u>Phone</u>
By-laws	Pete Zoller	480-293-3038
Ethics	Lee Henderson	480-921-8000
Standards	Don Sellmeyer	480-785-0577
Certification	Barry Eager	480-948-1553
Education	Leroy McLaren	602-222-0225
Program	Don Sellmeyer	480-785-0577
Finance	Deborah Williams	602-651-7146
PR	Bill Boren	480-994-1575
Historic	Bill Boren	480-994-1575
Awards	Roscoe Hodson	602-222-5300
Planning	Pete Zoller	480-293-3038
Calling	Mike Carson	602-222-5300
Nominations	Roscoe Hodson	602-222-5300
Membership	Alan Skinner	602-997-0000
Activities	Ken Stohlmann	602-499-0114
Scholarship	Pete Zoller	480-293-3038
On-line	Joel Smith	602-241-9800

NEWSLETTER INTERNET ADDRESSES

The National ASPE website address is: www.aspenational.com. Chapter Six's website's address is: www.aspechapter6.org. The Chapter website has the newsletter "Addenda News" on line

Committee Updates

COMMITTEE UPDATES

We would like to get more members involved in the committees. Please contact the committee chairperson if you would like to be part of their committee.

MEMBERSHIP - No report this month

ETHICS - No report this month.

PROGRAMS - If you have a guest speaker in mind for one of our meetings or would like to help on this committee, please contact Don Sellmeyer at: 480-785-0577.

STANDARDS - no report this month .

CERTIFICATION - Contact Barry M. Eager, CPE, for all of the details on the CPE program.

EDUCATION - No report this month.

AWARDS - No report this month.

NOMINATIONS - No report this month.

CALLING (DINNER RESERVATIONS)- No report this month.

PUBLIC RELATIONS - No report this month.

ON-LINE - No report this month.

DINNER MEETINGS CHANGE TO SECOND TUESDAY

Please be aware that the monthly dinner meetings will now be on the second Tuesday of each month. Here are the dates for the next several months.

February 8th	March 8th
April 12th	May 10th
June 14th	July 12th
August 9th	September 13th

BOARD OF DIRECTORS MEETINGS SCHEDULE

The following is a list of dates for board of director's meetings for the current year:

<u>Date</u>	<u>Location</u>
February 15, 2005	Undetermined
April 19, 2005	Sundt Construction
June 18, 2005	Undetermined

EMPLOYMENT OPPORTUNITIES

Ruggles Masonry is searching for an Estimator for a Commercial masonry company. 3 years min exp. Competitive wages and benefits package. They are looking for someone that has experience in Word, Excel and Tradesman Estimating Software. If interested fax resume to 623-245-1914 or e-mail rugglesmasonry@qwest.net

2004-2005 OFFICERS

PRESIDENT **ALAN SKINNER**
SKINNER INTERIOR SYSTEMS
 Work Ph.: (602) 997-0000

DIRECTOR **CHIP HARGETT**
JOHNSON CARLIER, INC
 Work Ph.: (602) 275-2222

1st VP **DON SELLMEYER**
SCCI
 Work Ph.: (480) 785-0577
 e-mail: dsellmeyer@dsccl.com

DIRECTOR **ARTHUR R. GUDITH**
WESTPAC
 Work Ph.: (602) 956-1323

2nd VP **KEN STOHLMANN**
PAUL RICH ROOFING
 Work Ph.: (602) 331-3379

DIRECTOR **RON YORK**
SUNDT CONSTRUCTION
 Work Ph.: (480) 293-2000

TREASURER **DEBORAH WILLIAMS**
BROWN & BROWN INSURANCE
 Work Ph.: (602) 651-7146

DIRECTOR **ROSCOE HODSON**
KITCHELL CONTRACTORS
 Work Ph.: (602) 222-5300

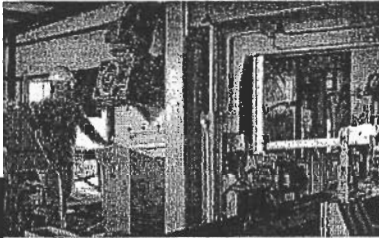
SECRETARY **ROSE TAYLOR**
Integrated Process Technologies, Inc.
 Work Ph.: (480) 889-1588

DIRECTOR **FREDRICK THOMAS**
BARRETT HOMES CONTRACTORS
 Work Ph.: (602) 269-2348



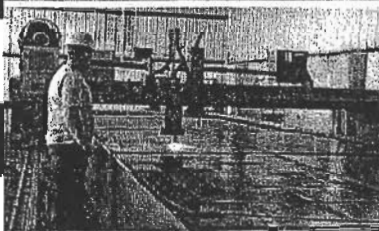
**YOUR SOURCE FOR
STEEL, FABRICATION &
PRE-ENGINEERED METAL
BUILDING MANUFACTURING**

AGATE Steel's state-of-the-art facility now has the latest equipment to provide high speed, high quality structural & miscellaneous steel fabrication for your next project.



**Peddinghaus
Automatic Beam Drill Line**

NEW—Drills beams, angles, square or rectangular tubing, channel & flat stock up to 30" wide



**CNC Plasma
Burn Table**

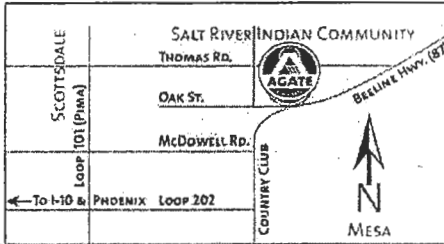
10'x40', 2" Plate Cutting Capacity

**AGATE Steel
Sales Yard**

We sell and deliver all types of pipe and steel.



**AGATE STEEL, INC.
480-994-9455**



Robert A. Smalley
Manager of Pre-Construction Services

Over 90 Years In Excellence

E-Mail: rsmalley@umec.com

An Equal Opportunity Employer
An EMCOR Company



1200 N. Sickles Drive
Tempe, AZ 85281-1853
Main Office 480.921.0903
Fax 480.921.1413
Mobile 602.316.7094

Don Sellmeyer, C.P.E.
Certified Professional Estimator

Pre-Construction
& Construction

SCCI Consulting Inc

Bus. (480) 785-0577
Fax (480) 592-9191
Cell (480) 620-8392
e-mail: dsellmeyer@dscci.com



SUN SEARCH

**SERVING THE
CONSTRUCTION
INDUSTRY WITH
EXPERIENCE AND
INTEGRITY**

Celebrating our 12th year.

480-661-7300



THE BILLBOARD



GO Repro

An ESOP Company

4102 N. 24th Street, Phoenix, AZ 85016
602-266-6544 (Main)
602-266-5050 (For Pickup)

- Digital Prints
- Specifications
- Color Copies
- Supplies



- Planroom
- Bid Distribution Services
- Gobid@GoRepro.com
- Banners


Contractor Printing Services That Save You Time and Money!!

- Copies made directly from blueprints or digital files
- Specification manuals - high volume, fast turn around
- Color blowups from 8.5"x11" to 50"x100"
- Plotter paper and drafting supplies
- Bid Set Distribution Services via the internet [GObid]



©Reprographic Systems, Inc. d/b/a GoRepro 2002. GoRepro is a registered service mark.

Visit us @ www.GoRepro.com



THE ADDENDA NEWS

American Society of Professional Estimators, Phoenix, Arizona, Chapter Six

P.O. Box 1177, Scottsdale, Arizona 85252

ADDRESS CORRECTION REQUESTED

